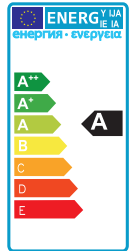
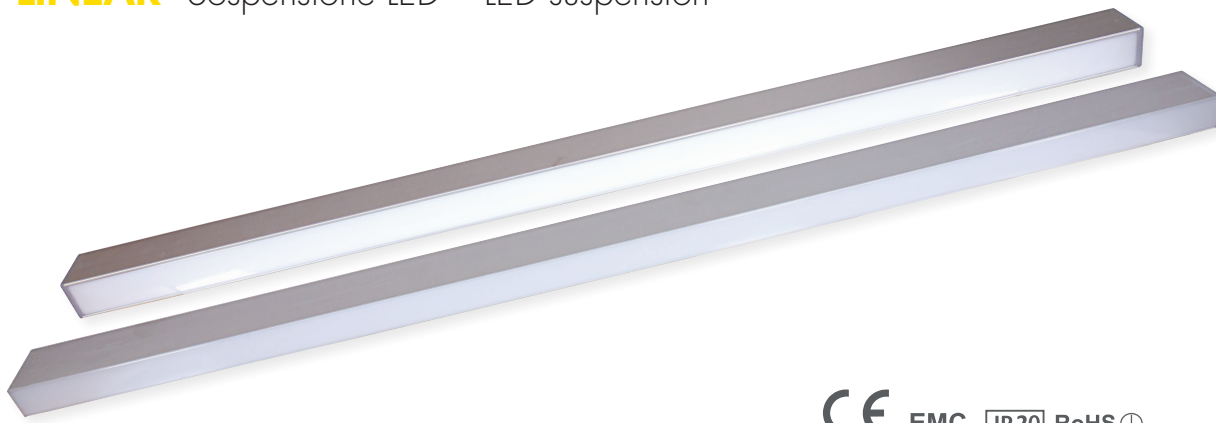
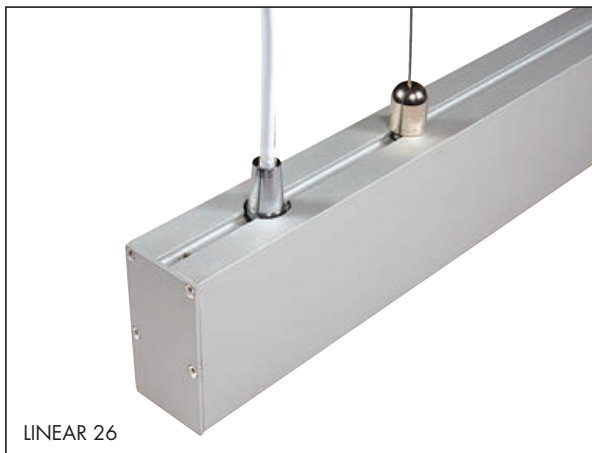


LINEAR Sospensione LED • LED suspension

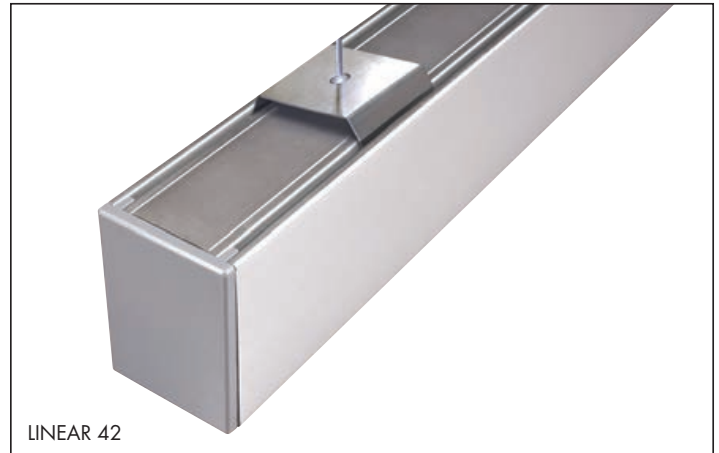
QUALIKO^{sr}



CE EMC IP20 RoHS



LINEAR 26



LINEAR 42

Type	Part N°	Dimensions (mm)	Input (V)	°Kelvin	Flux (Lm)	Power +/- (W Max)	Packing box dimensions (mm)	Weight (kg)
LINEAR 26 NW	BLS3567A26NW	1200x35x67h	230	4000°	1920	26	1290x115x90	2,10
LINEAR 26 WW	BLS3567A26WW	1200x35x67h	230	3000°	1636	26	1290x115x90	2,10
LINEAR 42 NW	BLS4865A42NW	1200x48x65h	230	4000°	3600	42	1300x110x95	2,80
LINEAR 42 WW	BLS4865A42WW	1200x48x65h	230	3000°	3060	42	1300x110x95	2,80

Sospensione LED per interni

- Schermo in Policarbonato e corpo in alluminio.
- Applicazioni tipiche: abitazioni, uffici, laboratori, etc.
- CRI>80

LED suspension for interiors

- Polycarbonate screen, aluminium body.
- Typical applications: homes, office, laboratories, etc.
- CRI>80

Lineare Pendelleuchten

- Schirm aus Polycarbonat und Körper hause aluminium
- Typische Anwendungen: Wohnungen, Büros, Workshops, usw.
- CRI>80

Sospension LED pour usage intérieur

- Écran en polycarbonate et corps en aluminium.
- Applications typiques: maisons, bureaux, laboratoires, etc.
- IRC>80

Suspensión LED para interiores

- Pantalla de Policarbonato, cuerpo de aluminio.
- Aplicaciones típicas: viviendas, oficinas, laboratorios, etc.
- CRI>80

